

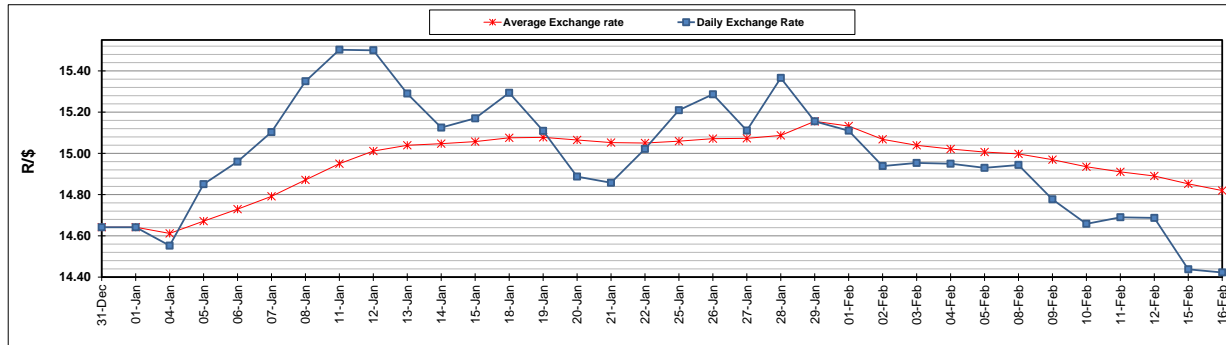
	PETROL 95 ULP	PETROL 93 ULP & LRP	DIESEL 0.05%	DIESEL 0.005%	ILL. PAR.
GAUTENG PUMP PRICE (SA c/l) AS FROM 03/02/2021	1,567.000	1,550.000	-	-	-
WHOLESALE PRICE (SA c/l) AS FROM 03/02/2021	-	-	1,358.420	1,360.820	798.688
SINGLE NATIONAL MAXIMUM RETAIL PRICE	-	-	-	-	1,008.000
BASIC FUEL PRICE - 16/02/2021 (SA c/l)	651.327	642.474	645.464	648.967	626.340
PRESS RELEASE CONTRIBUTION TO BFP 03/02/2021 - 16/02/2021 (SA c/l)	600.170	593.170	599.630	602.030	586.128
UNIT OVER/(UNDER) RECOVERY - 16/02/2021 (SA c/l)	(51.157)	(49.304)	(45.834)	(46.937)	(40.212)
AVERAGE BASIC FUEL PRICE 29/01/2021 - 16/02/2021	636.604	627.912	631.870	635.584	612.955
AVERAGE UNIT OVER/(UNDER) RECOVERY 29/01/2021 - 16/02/2021	(55.127)	(53.434)	(45.625)	(47.169)	(40.442)

ANALYSIS MOVEMENT OF AVERAGE OVER/(UNDER) RECOVERY

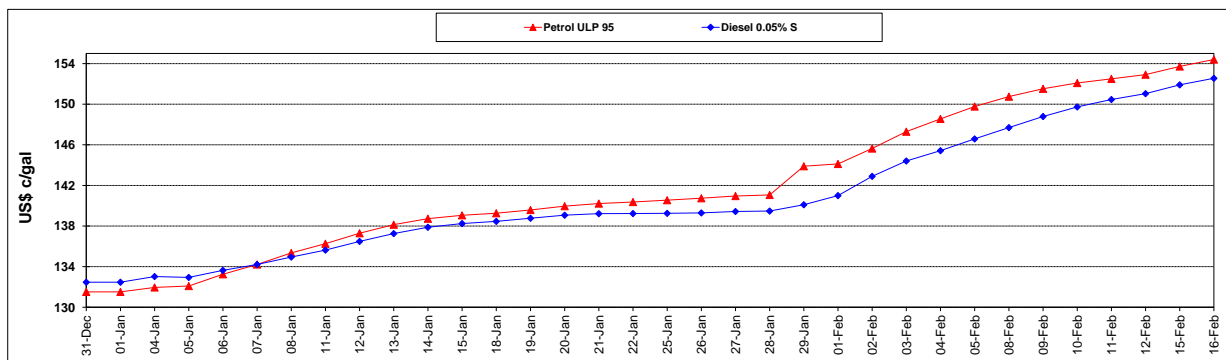
	PETROL 95	PETROL 93	DIESEL 0.05%	DIESEL 0.005%	ILL. PAR.
- MOVEMENT IN INTERNATIONAL PRODUCT PRICES	(66.621)	(64.772)	(57.035)	(58.646)	(51.510)
- MOVEMENT IN EXCHANGE RATE	11.495	11.338	11.410	11.477	11.068
AVERAGE UNIT OVER/(UNDER) RECOVERY 29/01/2021 - 16/02/2021	(55.127)	(53.434)	(45.625)	(47.169)	(40.442)

R/\$ EXCHANGE RATE - (R/\$14.4225 - 16/02/2021)

EXCHANGE RATE USED IN BASIC FUEL PRICE



INTERNATIONAL PRODUCT PRICES OF BASKET USED IN BASIC FUEL PRICE



BASIC FUEL PRICE IN SA CENTS PER LITRE

